

EVENTS

July Speaking Tour June 27-July 22

Kirksville, MO, Denver, IA, Minneapolis, MN
Bemidji, MN, Roseau, MN

Grace Evangelical Free Ch Sunday, June 29
Bemidji Evangelical Cov'nt Ch Sunday, July 6
Riverside Lutheran Church Sunday, July 13
Others...TBA

International Women & Children (IWC) meets each Tuesday morning at UNL
Thais will lead in Nanette's absence.
August 5 Lincoln Children's Zoo

ISF International Student Fellowship

ISF Saturdays, 4pm-?? Through Aug 23
Tues Discipleship Group Ongoing
Monday Partnership Meetings Suspended due to travel
Partnership Formalization Last week of July?
Strategic Team
Big Red Welcome Planning Thursdays
Yellowstone Trip (Spauldings) July 3-9
Big Red Welcome August 24
First Day of Fall Semester August 25

FOR PRAYER

*Please keep the above dates & events in prayer
We may have to cancel travel through IA and the Twin Cities from Kirksville due to flood waters...

*Continue to pray for our partnership with ISI (Ron & Judy Spaulding) and for our Strategic Planning Team--for unity and like-mindedness, and wisdom from God as we more clearly define roles and plan for next school year.

*Continue to bring our vision before the Lord, asking for His help in executing concrete steps to get there.

*Praise God for Yi's return to ISF (he came to our Strategic Planning Day) and for Yi's witness, which led to his grandfather trusting Christ!

*Pray for ISF's new student leaders, some of whom are very young in their faith. We have to have 5 student members at all times to continue recognition at UNL, and 4 of those are elected officers! (Travis, Shiva, Nver, and Edel) They all came to the Strategic Planning Day and had valuable input.

*Pray for Nanette as she meets with women that she would see one trust Christ whom she could then mentor in the faith--maybe Thais from Int'l Women and Children.

*Pray the same for Kurt as he meets with Muslim friends and others.

*Pray for II Timothy 2:2 multiplication of followers of Christ for the nations.

*Pray for Emily's friendship with Allison to take on a spiritual dimension during and following Bible camp.

A DYNAMIC, SPIRITUAL MOVEMENT IN LINCOLN IMPACTING INTERNATIONAL STUDENTS WITH CHRIST'S LOVE BY LINKING THEM WITH CHRISTIANS WHO SHARE THE GOAL OF MAKING DISCIPLES OF ALL NATIONS.

*Pray for students like Daram & Stella, who have returned home, to be light for Christ in their culture.

*Pray for "Chip" to get connected with Cito Cruz in Washington D.C. during his internship--Cito serves with InterFACE at American University and reaches out to many of the interns from African and other nations.

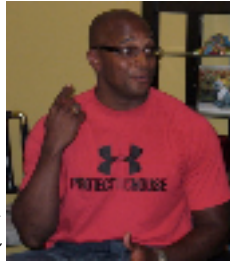
Paula shares about Ireland at the semester's last ISF Friday



Paula and others hear a former Husker Football National Champion share his testimony with the Gospel and a challenge to follow Jesus.



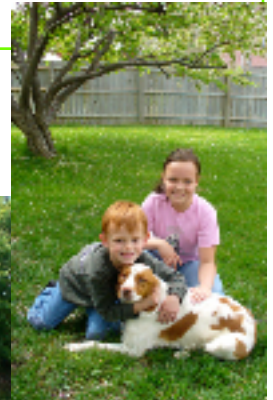
Nanette encourages Stella in following Christ as she returns to Korea while Daram listens and agrees.



"Chip" says good-bye to UNL and our ISF group, and explains about his internship in Washington, D.C. this year.



We adopted Madi, a 2-year-old Brittany Spaniel in May--what a good dog! She is Emily's answer to 4 years of prayer and begging (like the persistent widow!)



Emily turns 10 and goes to camp--Timberlake Ranch camp.



A family photo op at the Bible camp.



With prayers for you, "that the eyes of your heart may be enlightened in order that you may know the hope to which he has called you, the riches of his glorious inheritance in the saints, and his incomparably great power for us who believe. That power is like the working of his mighty strength, which he exerted in Christ when he raised him from the dead and seated him at his right hand in the heavenly realms, far above all rule and authority, power and dominion, and every title that can be given, not only in the present age but also in the one to come. And God placed all things under his feet and appointed him to be head over everything for the church, which is his body, the fullness of him who fills everything in every way" (Ephesians 1:18-23).

Until the Whole World Knows,
Kurt & Nanette Olsen